



Rio 600 User Guide

About the Rio User Guide

The Rio 600 User Guide includes the following information:

[Introduction](#)

[Using your Rio](#)

[Using Rio Menu options and settings](#)

[Using the Rio software](#)

[Accessories and e-store](#)

[Understanding digital audio terms](#)

[Frequently asked questions \(FAQ\) and troubleshooting](#)

[Warranty](#)

[Regulatory](#)

[Customer care](#)

[Index](#)

To learn more:

- Refer to the Getting Started Guide for the basics on how to set up and start using your Rio.
- Click the RealJukebox, AudibleManager or SoundJam software Help menus for detailed instructions on how to use the software to convert CD tracks into compressed digital audio formats, get audio from the Internet, or transfer tracks to your Rio.
- Visit the [Rio Web site](#).

Navigating and printing the Rio User Guide

Important: We strongly recommend that you use Adobe Acrobat version 4.0—available on the Rio software CD—to view and print the Rio User Guide.

The online Rio User Guide is in Adobe Acrobat (.PDF) file format. Click [links](#) (blue underlined text) to jump to another location in the document or to a location on the World Wide Web.



Click the Index icon at the top of any page (by the page number) to go to the index—or you can click the Index bookmark. Click page numbers in the Index to jump to a topic.

Using Acrobat toolbar icons



Click the Show/Hide Navigation Pane icon in the Acrobat toolbar to show a list of bookmarks. Bookmarks are links to the contents of the User Guide. Click any bookmark to jump to the page in the User Guide that contains the topic.



Click the Print icon in the Acrobat toolbar to print the User Guide. The size of the User Guide is optimized for printing.



Legal notices

Copyright © 2000-2001 SONICblue Incorporated. All Rights Reserved.

SONICblue Incorporated does not assume any responsibility for errors or omissions in this document or make any commitment to update the information contained herein.

Rio is a registered trademark of RioPort, Inc. in the USA and/or other countries and is used under license.

The RealPlayer and the RealJukebox are included under license from RealNetworks, Inc. Copyright 1999. RealNetworks, Inc. Patents pending. All rights reserved.

Microsoft, Windows Media, and the Windows Logo are trademarks or registered trademarks of Microsoft Corporation in the United States and/or other countries.



All other product names may be trademarks of the companies with which they are associated.

First Edition, March 2001.

Part Number 75510281-005.



Introduction

The Rio 600 provides the ultimate listening experience while you exercise, commute or relax. Create and mix your favorite selections on your PC or Mac for playback on your Rio. Your player is similar in function to a portable cassette or CD player. However, it has no moving parts, so it delivers skip-free music under any conditions. It is about the size of an audio cassette or pager and weighs only a few ounces.

The Rio interfaces with your computer through the USB port. Use the software included on the CD to:

- Organize digital audio tracks on your computer.
- Organize tracks on your Rio.
- Record (encode) your audio CDs.
- Search for tracks on your computer or on the Internet.

In addition, there are many cool accessories you can purchase separately to customize your Rio. Go to the [Accessories](#) section for information about accessories for your Rio 600.

Sources on the Internet for digital audio content include:

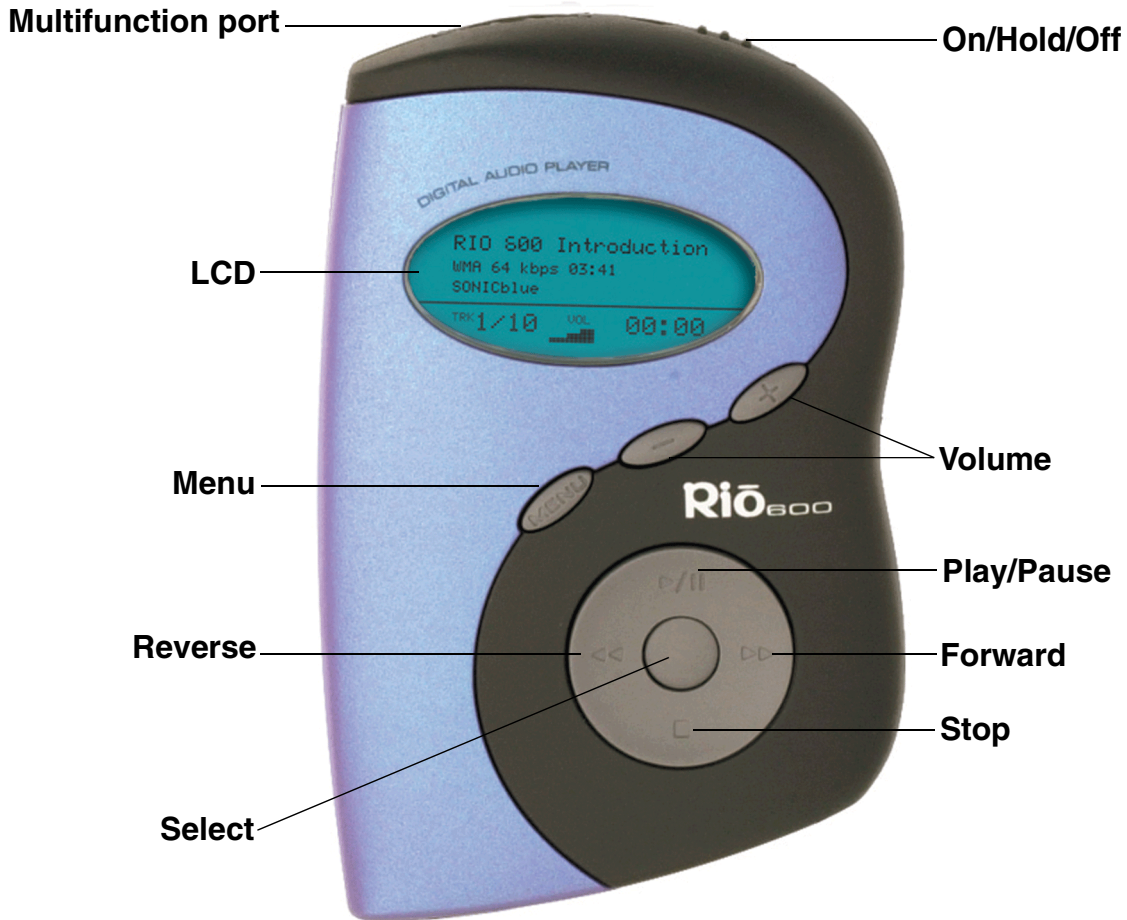
Riohome.com

WindowsMedia.com

Audible.com—for spoken audio

Using your Rio

This section explains what you need to know about using Rio buttons and controls.



Using Rio buttons and controls

- **Select**: The center navigation button. In play mode, press and hold **Select** for about two seconds to jump to a list of tracks you can pick from to play. To set a bookmark, press **Select** while the Rio is in pause mode. In menu mode, press **Select** to choose a menu or dialog option.
- **▶/||**: Play/Pause; the top navigation button. In play mode, press **▶/||** once to play a track; press it again to pause. When paused, the play/pause icon appears as two blinking vertical bars on the LCD. If your Rio is left in pause mode for an extended period of time, it goes into sleep mode to conserve battery life. Press **▶/||** to wake your Rio from sleep mode. In menu mode, press **▶/||** to navigate up through menu options.
- **■**: Stop; the bottom navigation button. In play mode, press **■** to stop playing the current track. Press and hold **■** for about two seconds to put your Rio into sleep mode to conserve battery life. In menu mode, press **■** to navigate down through menu options.



- **▶▶**: Forward; the right navigation button. In play mode, press and release **▶▶** to skip to the next track on your Rio. Press and hold **▶▶** to fast-forward through the track currently playing. In menu mode, press **▶▶** to navigate through menu options.
- **◀◀**: Reverse; the left navigation button. In play mode, press and release **◀◀** to skip to the beginning of the track currently playing on your Rio. Press and hold **◀◀** to fast-rewind through the current track. In menu mode, press **◀◀** to navigate through menu options.
- **Liquid Crystal Display (LCD)**: In play mode, the LCD provides the following information—clockwise from the top left:

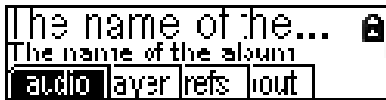


- **Track name**: Displays the title of the currently selected track. Song name scrolls if the name is longer than the width of the display.
- **Hold icon (lock)**: Appears if the Rio is set to Hold mode. Hold locks all settings except the **Power** switch on the Rio.
- **Play/Pause icon**: Displays either a **Play** icon (triangle) or a **Pause** icon (two vertical bars), to show the current action of the Rio.
- **Divider line**: Graphically organizes the display.
- **Current song position**: Displays the play location in the current track in minutes:seconds (mm:ss) form. For Audible content the display includes hours (hh:mm or hh:mm:ss).
- **Volume level**: Displays the volume setting in both digital and graphic form. The bar-graph disappears as volume is reduced and re-appears as volume is increased. Volume level ranges from 0-20.
- **Track display**: Displays the number of the currently selected track and the total number of tracks on your Rio. If a playlist is active, the track count shows the number of tracks in a playlist.
- **Album name/track information/artist name**: Displays album name, track information, and artist name. Album name displays for a few seconds, followed by track information, followed artist name. Press **Select** to scroll through album name, track information, and artist name. Track information includes the codec type (MP3, WMA, and so on), the bitrate (XXX kbps), and the track time (XX:XX min:sec).



Rio Menu options and settings

When the **Menu** button is pressed, the LCD displays Rio menu options:



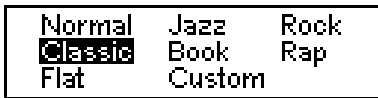
- [Audio](#): Preset and custom equalizer settings.
- [Player](#): Random, repeat, delete track, pick a track, bookmark, and playlist functions.
- [Prefs](#): Player settings including power saving (time to sleep), time and date, LCD display backlight, and battery level and calibration.
- [About](#): Various player status information including firmware version, internal and external memory used, battery level, calendar, and codec information.

Using Audio functions

Audio functions include built-in and custom equalizer (EQ) settings. Custom EQ lets you set the Treble and Bass values on a range from 1 (low) to 9 (high).

Selecting built-in EQ settings

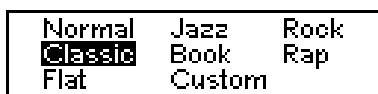
- 1 Press **Menu**.
- 2 Press the **◀** or **▶** buttons to navigate to **Audio**.
- 3 Press **Select**.
- 4 The EQ settings display.



- 5 Press the **▶/||**, **■**, **◀** or **▶** buttons to highlight the desired setting.
 - To save the setting press **Select**.
 - To return to play mode without saving any changes, press **Menu**.

Setting the Custom EQ

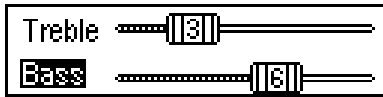
- 1 Press **Menu**.
- 2 Press the **◀** or **▶** buttons to navigate to **Audio**.
- 3 Press **Select**.
- 4 The EQ settings display.



- 5 Press the **▶/||**, **■**, **◀** or **▶** buttons to navigate to **Custom**.



6 Press **Select**.



7 Press the ▶/|| or ■ buttons to navigate between **Bass** or **Treble**.

8 Use the ◀◀ or ▶▶ buttons to increase or decrease the **Bass** or **Treble** value from 1 (low) to 9 (high).

- To save the settings press **Select**.
- To return to play mode without saving any changes, press **Menu**.



Using Player functions

Player functions include:

- [Play options](#): Repeat or randomize tracks.
- [Delete tracks](#): Remove content from the Rio.
- [Pick a track](#): Select and play a track.
- [Bookmarks](#): Play or delete bookmarks.
- [Playlist](#): Create new playlists, manage playlists or remove playlists from the Rio.

Setting Repeat and Random play options

- 1 Press **Menu**.
- 2 Press the ◀ or ▶ buttons to navigate to **Player**.
- 3 Press **Select**.
- 4 Press the navigation buttons to highlight **Play Options**.
- 5 Press **Select**.
- 6 Press the ▶ / || or ■ buttons to navigate between **Repeat** or **Random**.
- 7 Press the ◀ or ▶ buttons to change the **Repeat** or **Random** setting.

Repeat settings include:

- **All**: All tracks repeat.
- **Track**: Current track repeats.
- **Off**: Turns off repeat function.

Random settings include:

- **On**: All tracks play in random order.
- **Off**: Turns off random function.

- 8 Press **Select** to save the settings. To return to play mode without saving any changes, press **Menu**.



Deleting tracks from the Rio

- 1 Press **Menu**.
- 2 Press the ◀ or ▶ buttons to navigate to **Player**.
- 3 Press **Select**.
- 4 Press the navigation buttons to highlight **Delete Tracks**.
- 5 Press **Select**. A list of all tracks on the Rio displays.



- 6 Press the ▶/|| or ■ buttons to navigate to the track you want to delete.
- 7 Press **Select**.
 - Highlight **Yes** on the Delete dialog, then press **Select** to delete the track.
 - Highlight **No** on the Delete dialog, then press **Select** to return to the track list without deleting the track.
 - To return to play mode without saving any changes, press **Menu**.

Picking a track to play

In play mode, you can press and hold **Select** for about two seconds to jump to the **Pick a track** list.

- 1 Press **Menu**.
- 2 Press the ◀ or ▶ buttons to navigate to **Player**.
- 3 Press **Select**.
- 4 Press the navigation buttons to highlight **Pick a track**.
- 5 Press **Select**. A list of tracks displays.
- 6 Press the ▶/|| or ■ buttons to navigate to the track you want to play.
- 7 Press **Select**. The track immediately begins playing.

Adding bookmarks

- 1 Press ▶ / II during playback to pause.
- 2 Press **Select** for to create a new bookmark. If you press and hold **Select** the **Pick a track** list displays.

Playing or deleting bookmarks

- 1 Press **Menu**.
- 2 Press the ◀ or ▶ buttons to navigate to **Player**.
- 3 Press **Select**.
- 4 Press the navigation buttons to highlight **Bookmarks**.
- 5 Press the ▶ / II or ■ buttons to highlight **Play Bookmark** or **Delete Bookmark**.
- 6 Press **Select**.
 - If **Play Bookmark** is selected, a list of bookmarks displays. Press the ▶ / II or ■ buttons to highlight a bookmark. Press **Select** to play the bookmark.
 - If **Delete Bookmark** is selected, a list of bookmarks displays. Press the ▶ / II or ■ buttons to highlight a bookmark. Press **Select** to choose the bookmark to be deleted. Press the ◀ or ▶ buttons to highlight **Yes** or **No** on the **Delete Bookmark?** dialog. Press **Select** to remove the bookmark and return to the bookmark list.



Working with Playlists

Playlist options include:

- **Choose:** Select a playlist from playlists stored on the Rio.
- **New:** Build a new playlist.
- **Edit:** Modify an existing playlist.
- **Remove:** Remove a playlist from the Rio.

- 1 Press **Menu**.
- 2 Press the ◀ or ▶ buttons to navigate to **Player**.
- 3 Press **Select**.
- 4 Press the navigation buttons to highlight **Playlist**.
- 5 Press **Select**.
- 6 Press the ◀ or ▶ buttons to navigate to the desired playlist option.
- 7 Press **Select**.

Choosing a playlist

- 1 Select the **Choose** playlist option. Any existing playlists display.
- 2 Press the ▶ / || or ■ buttons to highlight the desired playlist.
- 3 Press **Select**.

Building a playlist

- 1 Highlight the **New** playlist option.
- 2 Press **Select**. New playlists are numbered in sequential order starting at “01”.
- 3 After a few moments, the playlist editor displays all tracks on the Rio.



- 4 Press the ▶ / || or ■ buttons to highlight a track.
 - Press **Select** to assign a playlist order number to the track. This number shows the order in which the track is played in the playlist.
 - Press the ◀ or ▶ buttons to change the track order number.
- 5 When you are finished, highlight **-done editing-** at the bottom of the playlist editor, and press **Select** to save the new playlist and exit to the playlist options menu.

Modifying a playlist

- 1 Highlight the **Edit** playlist option.
- 2 Press **Select**.
- 3 Press the ▶/|| or ■ buttons to navigate to the playlist.
- 4 The playlist editor displays tracks and their playlist order numbers in the left column.
 - To add tracks or remove tracks from the playlist, highlight a track and press **Select** to tag or untag the track with a number in the left column. This number shows the order in which the track is played in the playlist.
 - To change the track order, highlight a track and press the ◀◀ or ▶▶ buttons change the track order number in the playlist.
- 5 When you are finished, highlight **-done editing-** at the bottom of the playlist editor and press **Select** to save the new playlist and exit to the playlist options menu.

Removing a playlist

- 1 Select the **Remove** playlist option.
- 2 Press the ▶/|| or ■ buttons to highlight the playlist you want to delete.
- 3 Press **Select**.
 - Highlight **Yes** on the Delete dialog, then press **Select** to delete the playlist.
 - Highlight **No** on the Delete dialog, then press **Select** to exit without saving any changes.
 - To return to play mode without saving any changes, press **Menu**.



Setting Preferences

Preferences include these Rio settings:

- [Power saving](#) (time to sleep).
- [Time and date](#).
- [Display backlight](#).
- [Battery level display and calibration](#).

Adjusting the power saving setting

You can adjust the time to sleep (suspend) setting from one to nine minutes. To turn off the power saving feature, set the time to sleep setting to 0 (zero).

- 1 Press **Menu**.
- 2 Press the ◀ or ▶ buttons to navigate to **Prefs**.
- 3 Press **Select**.
- 4 Press the navigation buttons to highlight **Power Saving**.
- 5 Press **Select**.



- 6 Press the ◀ or ▶ buttons to adjust the setting.
 - To save the setting press **Select**.
 - To return to play mode without saving any changes, press **Menu**.

Setting time and date

- 1 Press **Menu**.
- 2 Press the ◀ or ▶ buttons to navigate to **Prefs**.
- 3 Press **Select**.
- 4 Press the navigation buttons to highlight **Time/Date**.
- 5 Press **Select**.



- 6 Press the ◀ or ▶ buttons to highlight each of the time and date fields.
- 7 Press the ▶/|| or ■ buttons when any of the time or date fields is highlighted to change the value. The date field will not roll to a value that is not valid for the selected month and year.
- 8 Press **Select** to save the time/date settings. To return to play mode without saving any changes, press **Menu**.

Adjusting LCD display backlight

- 1 Press **Menu**.
- 2 Press the ◀ or ▶ buttons to navigate to **Prefs**.
- 3 Press **Select**.
- 4 Press the navigation buttons to highlight **Display**.
- 5 Press **Select**.
- 6 Press the ◀ or ▶ buttons to adjust the **Backlight** time on setting.

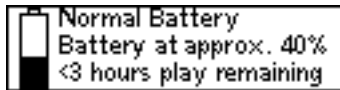
Backlight settings include:

- timed **1, 2, 5, or 10 seconds**.
 - **always on**.
 - **always off**.
- 7 Press **Select** to save the setting.



Displaying battery information

- 1 Press **Menu**.
- 2 Press the ◀ or ▶ buttons to navigate to **Prefs**.
- 3 Press **Select**.
- 4 Press the navigation buttons to highlight **Battery**, then press **Select**.
- 5 Press the navigation buttons to highlight **Power level**, then press **Select**. Battery information displays:



- Battery type: Rechargeable or Normal.
 - Battery charge level: The battery's charge state percentage.
 - Run time estimation: The battery's remaining play time.
 - Battery level graphic: A bar graph inside a battery icon displays the approximate remaining charge.
- 6 Press **Menu** to return to play mode.

Calibrating the battery—For use with rechargeable [backpack accessories](#) (sold separately)

Warning: Do not remove the rechargeable battery from the backpack.

Calibrating the battery ensures accurate battery level display. The first time you charge it, it is important to calibrate the battery backpack and give it a full charge overnight or until the calibration timer expires. You do not need to charge the battery before you calibrate it.

Note: You do not have to calibrate the battery each time you charge it—only the first time.

- 1 Connect the AC adapter into the rechargeable battery port at the bottom of the backpack.
- 2 Connect the AC adapter power cord into an electrical outlet. The charge lamp on the backpack lights up when charging begins.
- 3 Slide the Rio power switch to **On**.
- 4 Press **Menu**.
- 5 Press the ◀ or ▶ buttons to navigate to **Prefs**.
- 6 Press **Select**.
- 7 Press the navigation buttons to highlight **Battery**, then press **Select**.
- 8 Press the navigation buttons to highlight **Calibrate**, then press **Select**.
- 9 Wait overnight or until the timer expires to give the backpack a full charge.

Displaying About information

- 1 Press **Menu**.
- 2 Press the **◀** or **▶** buttons to navigate to **About**.
- 3 Press **Select**. The following information is displayed:

```

John Doe's Rio 600   V1.03
Int: 32M ██████████
Ext: 64M ██████████
    
```

- Rio model number or message defined through the software.
 - Firmware version the Rio is using.
 - Total internal memory amount installed and a bar graph display of the amount used.
 - Total external memory installed and a bar graph display of the amount used by tracks.
- 4 Press **■** to display battery information:
 - Battery type: Rechargeable or Normal.
 - Battery charge level: The battery's charge state.
 - Run time estimation: The battery's remaining play time.
 - Battery level graphic: A bar graph inside a battery icon displays the approximate remaining charge.
 - 5 Press **■** to display clock and calendar information.

```

mch tu wed thur fri sat sun
Feb 23rd 12:34 PM 2000
    
```

- 6 Press **■** to display codec information.

```

Compression Support:
WMA MP3
    
```

- 7 Press **Menu** to return to play mode.

Using the Rio software

Using RealJukebox

RealJukebox audio management software is included on the software CD. Use RealJukebox to:

- Organize digital audio tracks on your computer.
- Organize tracks on your Rio.
- Record (encode) your audio CDs.
- Search for tracks on your computer or on the Internet.

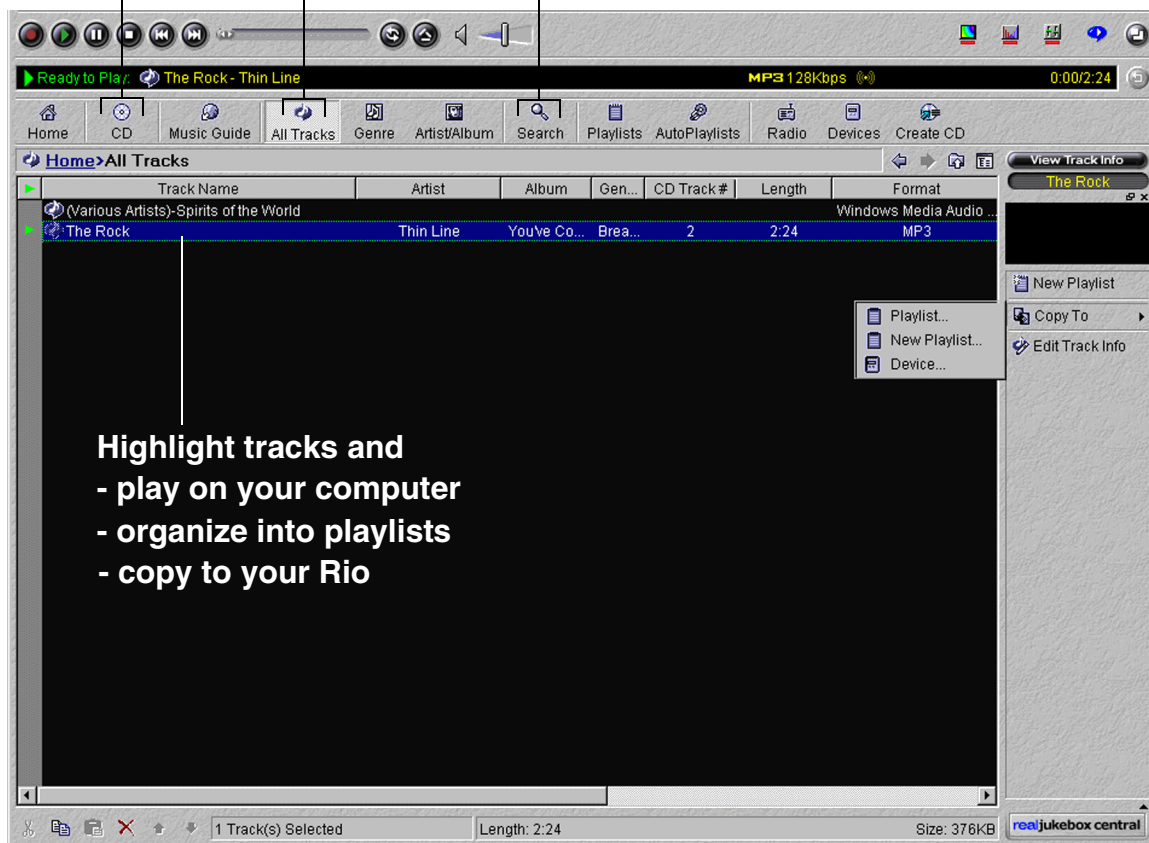
To learn more about using RealJukebox, from within the software:

- Click the **Help** menu or
- Click the **Home** button, scroll down to **Real Jukebox Help**, and select **Using Real Jukebox** and/or **Frequently Asked Questions**.

**Record (encode)
your audio CDs**

**Find tracks on your
computer or on the Web**

Organize your tracks



**Highlight tracks and
- play on your computer
- organize into playlists
- copy to your Rio**

Copying tracks to your Rio

- 1 Plug the USB cable into the multifunction port on top of your Rio.
- 2 Plug the other end of the cable into the USB port on your computer.
- 3 Slide the power switch on top of your Rio to **On**.
- 4 Click the **All Tracks** button on the Real Jukebox software.
- 5 Click the desired track(s).
- 6 Click the right mouse button and select **Copy to Device** or click **Copy to > Device** in the right column on the window. Click **OK** on the dialog box.
- 7 Click **Copy Files** in the right column on the window.

Encoding a CD

- 1 Put an audio CD in your computer's CD-ROM drive.
- 2 Click the **CD** button.
- 3 The software prompts you and fills in track titles and other information via the Gracenote CDDB Web site.
- 4 Check the desired track(s)—click the check box to the left of the song title or click **Check All** in the right column on the window.
- 5 Recording begins...use the convenient playback controls at the top of the window to record, play, pause, and so on.

Using AudibleManager (PC only)

The AudibleManager software supports audio books, lectures, public radio programs, newspapers, and other spoken word audio programs.

Use AudibleManager to:

- Create an Audible.com account, where you may choose from thousands of spoken word audio programs.
- Download audio programs from the Internet to your PC.
- Transfer audio programs to your Rio.

For more information, visit the [AudibleManager Web site](#).

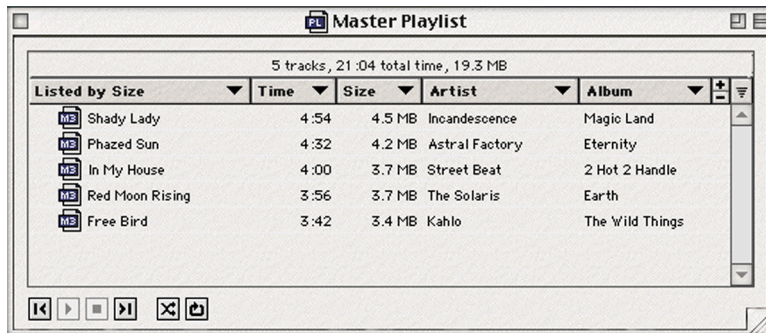
Using SoundJam MP (Mac only)

SoundJam MP player and encoder converts music into compressed digital quality MP3's from CD, MP2, AIFF, QuickTime™, SMD, Sound Designer, and WAV formats.

Master Playlist

Use the Master Playlist editor to:

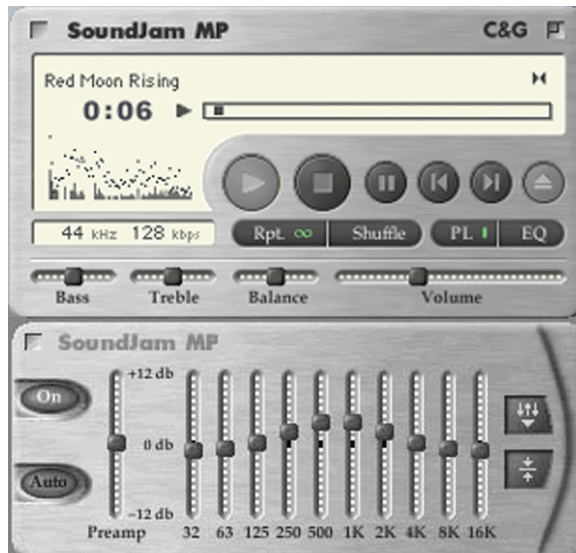
- Search your audio collection stored on your Mac.
- Build and manage custom playlists.



Main Window

Use the SoundJam MP Main Window to:

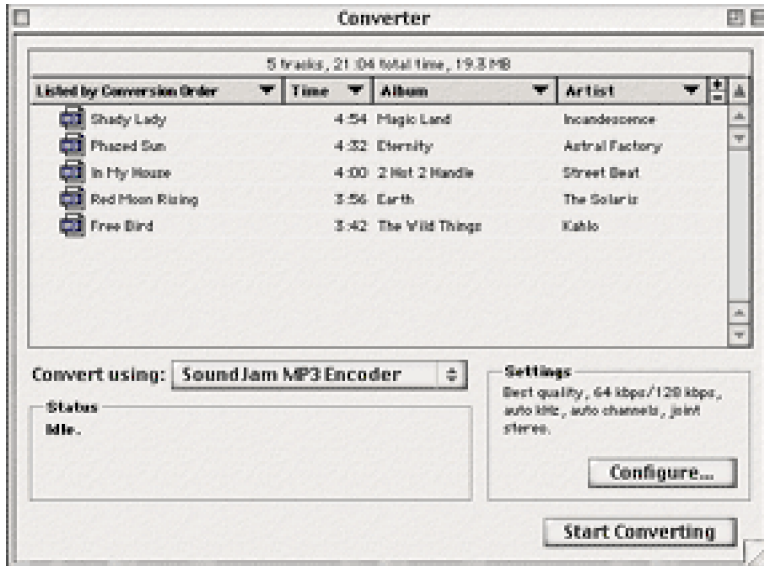
- Listen to audio on your Mac.
- Play music files from your playlist or CD-ROM.



Converter

Use the Converter window to:

- Encode audio CDs.
- Save tracks into MP3 format to be transferred to and played on your Rio.



Connector

The Connector window displays when you plug your Rio into your Mac with the USB cable. Use the Connector window to:

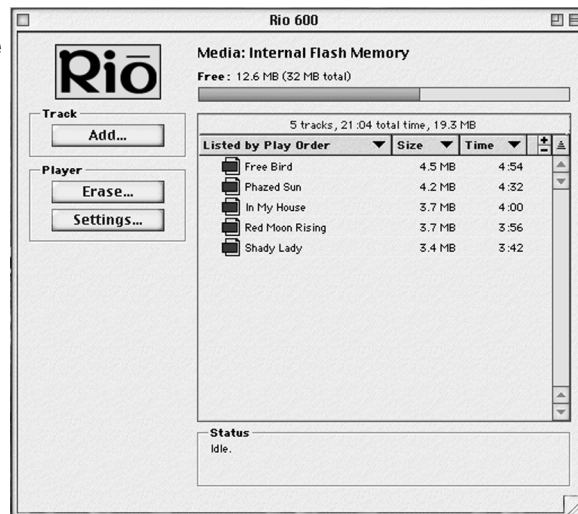
- Manage the content on your Rio.
- Export audio to your Rio. Choose the track by selecting “Add...” or drag the desired track to the view window.

Use the help system to learn more

The SoundJam software includes a complete online Help manual. To learn more about using the SoundJam MP software:

- 1 Click the Help Menu.
- 2 Select SoundJam MP Help.
 - Click the topic you are interested in for detailed step-by-step instructions.
 - Click How To Use This Help System to understand the basics of using the SoundJam Help.

For more information about SoundJam, visit the [SoundJam Web site](#).





Accessories

Customize your Rio with these cool digital audio accessories:

- [External Memory Backpacks](#)
- [RioTone™ Faceplates](#)
- [Headphones](#)
- [Car Cassette Adapter](#)
- [Carrying cases and bags](#)

Order accessories online from the [Rio e-store](#)

Approved Rio 600 replacement alkaline batteries

Your Rio 600 is powered by one AA size alkaline battery (included). Your Rio will run longer and perform best when using a good quality battery. Poor quality or leaking batteries can damage the Rio 600. The following brands of replacement batteries are approved for use with the Rio 600:

- Energizer AA size alkaline.
- Duracell Ultra AA size alkaline.

External memory backpacks and adapters

Expand the Rio memory storage with 32 MB and 64 MB accessory backpacks. Storage times vary by audio file codec and bitrate used.

Warnings: Do not remove the rechargeable battery from the backpack. Batteries can explode or leak if disposed of in fire, inserted backwards or disassembled.



32 MB Backpack

- Expands memory storage by approximately 30 minutes (MP3) to 60 minutes (WMA).
- Recharges with AC adapter.

Order online from the [Rio e-store](#)

64 MB Backpack

- Expands memory storage by approximately 60 minutes (MP3) to 120 minutes (WMA).
- Recharges with AC adapter.

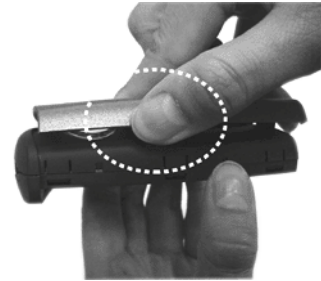
Order online from the [Rio e-store](#)

RioTone™ Faceplates

Available in a variety of colors and designs.

Removing the faceplate

- 1 Firmly press the button on the back of the Rio 600 to detach the backpack.
- 2 Remove the backpack from the Rio 600.
- 3 Small tabs on the back of the faceplate attach it to the front of the Rio. Holding the Rio in one hand, grasp the left side of the faceplate with your other hand and pull up to unclip the left side of the faceplate from the front of the Rio.
- 4 Remove the faceplate from the front of the Rio.



Attaching the faceplate

- 1 First, remove the backpack and any existing faceplate attached to the Rio.
- 2 Insert the tab by the Liquid Crystal Display (LCD) opening on the back of the new faceplate into the slot on the front of the Rio on the right side by the LCD.
- 3 Press the faceplate onto the front of the Rio, until the small tabs that clip the faceplate to the Rio snap completely into place. When the faceplate is attached, a tab is visible in the small window in the battery well in the back of the Rio.
- 4 Replace the backpack.



Order online from the [Rio e-store](#)

Headphones

Choose from many different styles of headphones.

Order online from the [Rio e-store](#)



Car Cassette Adapter

- Designed to work with any car stereo cassette player.
- Listen to your Rio in your car through your car's speakers.

Using the car cassette adapter

- 1 Plug the stereo plug (male) of the car cassette adapter into the headphone jack of the Rio.
- 2 Turn the cassette deck on. Set the volume to the lowest position.
- 3 Insert the car cassette adapter into the cassette deck.
- 4 Turn on the Rio and adjust the volume to medium level.
- 5 Play music on the Rio through your car's speakers.
- 6 Adjust the cassette deck volume to the desired level.



Order online from the [Rio e-store](#)

Carrying cases and bags

Carrying Case with belt clip

Provides access to buttons and controls while protecting your Rio.

Order online from the [Rio e-store](#)

Rio Travel Case

Keeps your Rio and accessories together when you travel.

Order online from the [Rio e-store](#)

Digital audio terms

AAC

Advanced Audio Coding (AAC) is one of the audio compression formats defined by the MPEG-2 specification. AAC used to be called NBC (Non-Backward-Compatible), because it is not compatible with the MPEG-1 audio formats. AAC may eventually replace MP3 since it offers better sound quality and greater file compression.

ADPCM

Adaptive Differential Pulse Code Modulation (ADPCM), is a form of pulse code modulation (PCM) that produces a digital signal with a lower bit rate than standard PCM. The Rio 800 uses ADPCM for voice recording. ADPCM produces a lower bit rate by recording only the difference between samples and adjusting the coding scale dynamically to accommodate large and small differences.

Bitrate

Bitrate denotes the number of bits per second used to represent an audio signal. The size and quality of a digital audio file is determined by the bitrate used when encoding the file. The higher the bitrate used, the higher the sound quality and the larger the file size. For example, with MP3, a bitrate of 128k is usually very close to CD quality, and takes up about 1MB per minute of music. At a 64k bitrate, the sound quality is similar to that of an FM radio signal, but you can get around two minutes of music in that same 1MB of storage space.

CDDB

See [Gracenote](#).

Codec

Depending on the context and kind of technology involved, codec can be defined in two ways. In telecommunications, a codec is usually a “coding/decoding” chip used to translate between digital and analog transmissions. A modem uses one to interpret incoming analog signals and converts the digital data stream coming from the computer into analog. Codec is also defined as a compression/decompression algorithm. Codecs are used to compress audio data into a file, often for efficient transmission over a network, and then decode it for playback.

The Rio 600 supports the following digital audio file codecs:

- MP3
- WMA
- ACELP.net (Audible)



DRM, security

Digital Rights Management (DRM) technologies protect copyright ownership of digital information. DRM became an issue with the rise of MP3 technology and Internet distribution of music. DRM platforms serve as a security “wrapper” around digital audio supporting Internet distribution while at the same time protecting and managing rights related to that digital information.

The security mechanism in the Rio supports several secure file formats. If the audio management software you are using supports secure file formats, when you download a secure track to the Rio, you must have the license associated with the track. If the Rio doesn't read a corresponding license for a track, the tracks themselves contain information on where you can purchase them. Publishers can program restrictions on how many times you can play, copy, or distribute a song directly into the music files. Although the Rio includes security, it is still able to accept and play standard MP3 files.

Encoding, or Ripping (a CD)

Encoding, or “ripping”, refers to converting an audio file from an audio CD into a compressed digital audio format, such as MP3 or WMA, that can be played on the Rio or on the computer.

Firmware

Firmware is software—programs or data—that has been written onto read-only memory (ROM). Firmware is a combination of software and hardware that is comparable to an operating system on a computer. The Rio firmware controls everything from the liquid crystal display and codec support to the Rio's many other functions.

To see your Rio's firmware version:

- 1 Press the **Menu** button.
- 2 Press the ◀ or ▶ (Forward or Reverse) navigation buttons to highlight **About**.
- 3 Press **Select** (center navigation button). The firmware version the Rio is using displays.

[How to upgrade the Rio firmware](#)

Gracenote

Gracenote, formerly known as the CD Database (CDDB), is a vast database of CD information that includes artist, disc name, song title, and other information. Gracenote supports hundreds of third party software CD players. Software programs use a CD's serial number to search the Gracenote Web site for CD information. Access to the Gracenote service is offered free of charge to end-users. Visit the [Gracenote Web site](#) for more information.

MP3

MPEG-1, Layer 3 Audio (MP3) is a compressed digital audio file format. This format allows for near CD quality sound, but at a fraction of the size of normal audio files. MP3 conversion of an audio track from CD-ROM reduces the file size by approximately a 12:1 ratio with virtually no loss in quality. This digital sound encoding and compression process was developed by the Fraunhofer Institut für Integrierte Schaltungen and Thomson Multimedia. MP3 uses perceptual audio coding and psychoacoustic compression to remove the redundant and irrelevant parts of a sound signal that the human ear doesn't hear. It also adds a Modified Discrete Cosine Transform (MDCT) that implements a filter bank, increasing the frequency resolution 18 times higher than that of layer 2. The MP3 encoding process is well suited for the transfer of high quality audio files with small file size over the Internet.

Playlist

Playlists let you organize lists of tracks to play in the order you choose. Playlists make it easier to manage large collections of music.

SDMI

The Secure Digital Music Initiative (SDMI) is a forum of over 130 companies in the fields of recorded audio content, computers, and consumer electronics, for the purpose of developing an integrated method of copyright protection technology that can be used worldwide. SDMI is working to create a framework for preventing improper usage of audio files and to promote legal music distribution services.

Skin

The skin is the software option that determines how digital audio player software applications appear on your computer screen. Some applications allow you to customize the color and window design of your software by changing the skin. Some skins omit certain playback controls for simplicity.

USB

Universal Serial Bus (USB) is the external bus standard that supports data transfer rates of 12 Mbps (12 million bits per second). The Rio uses USB to communicate with the computer. A single USB port can be used to connect up to 127 peripheral devices, such as mice, modems, and keyboards. USB also supports Plug-and-Play installation and hot plugging. It is expected to completely replace serial and parallel ports.

WMA

Windows Media Audio (WMA) is the compressed audio format created by Microsoft as an alternative to MP3. WMA may replace MP3 since it offers greater file compression—twice that of MP3—at the same or better sound quality.



FAQ and troubleshooting

How do you put music on the Rio?

The Rio interfaces with your computer through the USB port. You can get digital audio from numerous Internet sites or encode your own digital audio tracks from your audio CDs using the CD-ROM drive on your computer. Use the software included with the Rio to get audio from the Internet, encode tracks from your audio CDs, or download tracks to your Rio.

How much music will my Rio hold?

Note: Due to different software compression algorithms, the following information may vary slightly depending on what software you are using and what program the MP3 was created by.

To determine how much play time your Rio actually has, use the following equation:

$$\text{Rio Play Time} = M / (S \times 0.439)$$

where:

M=Rio memory size in MB (32MB, 64MB, 128MB, and so on).

S=Sampling Speed in kbps (128kbps, 80kbps, and so on).

The higher quality the MP3, the larger its size, causing it to take up more room on your Rio's memory.

The following bitrates are supported:

- 256 kbps, CD Quality, 5.6:1 reduction.
- 192 kbps, CD Quality, 7.5:1 reduction.
- 160 kbps, CD Quality, 9:1 reduction.
- 128 kbps, CD Quality, 11.25:1 reduction.
- 96 kbps, Near CD, 15:1 reduction.
- 80 kbps, Near CD, 18:1 reduction.
- 64 kbps, FM Radio, 22.5:1 reduction.

Note: If you use the WMA format instead of the MP3 format, you can have the same quality at about one half the size. For example, a 64 kbps WMA sounds as good as a 128 kbps MP3.

Can I use the Rio with Windows 95? I have the USB supplement pack.

No. The Rio USB devices can only be used with Windows 98, Windows ME or Windows 2000 operating systems, or Mac OS 8.6 or later. The Rio requires a newer standard of USB that is not available in Windows 95, even with the USB supplement pack.

The Rio is connected to the USB, why doesn't the computer recognize it?

First, make sure the Rio software is running and check to make sure the USB cable is fully connected to both the Rio and the computer. Then, turn the player off and back on.

Where is the serial number located on the Rio?

The serial number is on the back of the Rio under the backpack. Remove the backpack from the Rio to see the serial number (S/N).

What brand replacement alkaline batteries do you recommend?

Your Rio 600 is powered by one AA size alkaline battery (included). Your Rio will run longer and perform best when using a good quality battery. Poor quality or leaking batteries can damage the Rio 600. The following brands of replacement batteries are approved for use with the Rio 600:

- Energizer AA size alkaline
- Duracell Ultra AA size alkaline

What does the Rio Hold feature do?

The **Hold** feature on the Rio locks all buttons and controls except the Power switch. **Hold** is useful at times when the Rio may be bumped. For example, when exercising.

How do I upgrade the Rio firmware?

Checking your Rio's firmware version

Important: First determine the version of the firmware installed on your Rio. Do not “downgrade” your Rio firmware by installing an older version.

- 1 Press the **Menu** button.
- 2 Press the ◀ or ▶ (Forward or Reverse) navigation buttons to highlight **About**.
- 3 Press **Select** (center navigation button). The firmware version the Rio is using displays.

Downloading the firmware upgrade from the Rio Web site

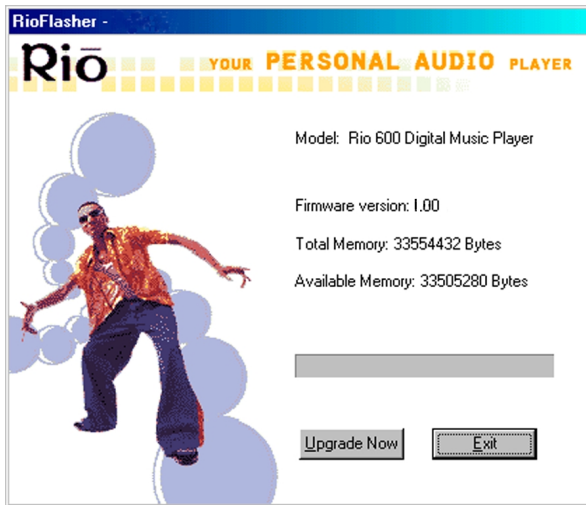
- 1 Go to the [Rio Web site](#)
- 2 Click the **Support** link in the bottom right corner of the page.
- 3 Navigate to the Rio Technical Support Updates page.
- 4 Select and download the latest **Rio 600 xxxx.exe (PC)** or **Rio 600 Update xxxx (Mac)** firmware upgrade file to your computer.

Upgrading the Rio firmware—PC

Important: Quit all other applications before running the firmware upgrade. While running the firmware upgrade, do not close the program, turn off the Rio or unplug the USB cable.

- 1 Connect the Rio to the computer with the USB cable.
- 2 Slide the Rio power switch to **On**.

- 3 Double-click the **Rio 600 xxxx.exe** firmware upgrade file. The RioFlasher window displays.

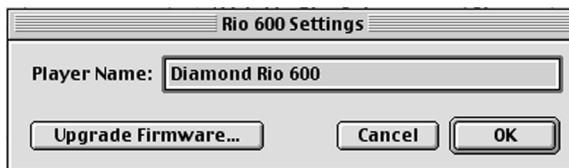


- 4 Click the **Upgrade Now** button on the RioFlasher window.
- 5 Click Yes.
- 6 When the upgrade is complete, a check of the firmware version displays the new version number.

Upgrading the Rio firmware—Mac

Important: Do not close the program, turn off the Rio or unplug the USB cable during the upgrade.

- 1 Connect the Rio to the computer with the USB cable.
- 2 Slide the Rio power switch to **On**.
- 3 Double-click the SoundJam icon. The Rio Connector window displays.
- 4 Click the **Settings...** button on the Rio Connector window. The Rio Settings window displays.



- 5 Click the **Upgrade Firmware** button in the Rio Settings window.
- 6 Choose the **Rio 600 Update xxxx** firmware upgrade file.
- 7 Click the **Open** button.
- 8 When the upgrade is complete, a check of the firmware version displays the new version number.

How do I register my SoundJam (Mac) software?

SoundJam allows 50 encodes prior to free registration that unlocks SoundJam for unlimited MP3 encoding. You must have an Internet connection to complete online registration. At the time of registration, you may choose to upgrade the features of the software for a small fee.

- 1 Double-click the hard drive icon.
- 2 Double-click the SoundJam folder.
- 3 Double-click the SoundJam MP icon to open the program. You will immediately be prompted to register online.
- 4 Click the **Register Now** button. Follow the instructions on the screen.
- 5 You will receive your unlock code by e-mail.

Why do I get an error when I click Read a CD to start the encoding process?

The following factors may interfere with the CD encoding process:

- 1 Over-utilization of the CPU during the encoding process. Close all other software before encoding.
- 2 Insufficient RAM to cache the track properly. Generally, 64 MB is fine if no other memory intensive application is running. Close all other software before encoding. Win 98 uses about 15-20 MB of RAM at startup depending on what applications you have running.
- 3 CD-ROM firmware. Even if a CD-ROM drive is new, it may require a firmware update from the manufacturer to correct audio extraction errors.
- 4 Overclocking. Overclocking the system—running it faster than it is rated to run—can have adverse effects on the peripheral components. If your system is overclocked, bring it back to its normal operating speed.

How can I get the best sound quality when encoding from a CD?

If you use a significant amount of your computer system's resources with other applications, encoding songs from a CD can result in poor quality recordings. If the song(s) you encode contain abnormalities, such as pops or skips, close down other applications which are running and encode those songs again. The condition of the audio CD—scratches and so on—can affect the quality of the recording as well.



One Year Limited Warranty

Our warranty to you

SONICblue Incorporated warrants that your product will be free from defects in materials and workmanship for a period of one year from the date of original retail purchase. If you discover a defect covered by this warranty, we will repair or replace the product at our option using new or remanufactured components. SONICblue Incorporated's liability is limited solely to the repair or replacement of the defective product. This warranty is extended to the original end user purchaser only and is not assignable or transferable to any other party. Any parts or boards removed in the replacement or remanufacture process shall become the property of SONICblue Incorporated. Out of warranty service may also be available for a fee.

How to obtain service under this warranty

To obtain service under this warranty, please contact the dealer from whom you purchased this product or call the SONICblue Incorporated Customer Care Center at (541) 967-2450 for return instructions.

[Customer Care](#) hours of operation are:

- Monday through Friday 5am-7pm, PT.
- Saturday 8am-4pm, PT.

You must deliver the product and the original sale receipt to either the dealer from who you purchased this product or to SONICblue Incorporated in order to obtain service under this warranty. If you return the product to us, you must pay for shipping to SONICblue Incorporated.

Product failures not covered by this warranty

This warranty covers defects in manufacture that arise from correct use of the device. It does not cover damage caused by abuse, misuse, improper modification or repair, moisture, extreme heat or cold, corrosive environments, shipping, or high voltage surges from external sources such as power line, telephone line, or connected equipment. This warranty does not cover wear and tear on covers, housing or wiring. This warranty also does not apply to any product with an altered or defaced serial number.

How to obtain out of warranty service

To obtain out of warranty service, please contact the SONICblue Incorporated [Customer Care](#) Center at (541) 967-2450 (see above for hours of operation).

Out of warranty service is provided for owners of Rio 800 Personal Digital Music Players who:

- Are unable to provide valid proof of purchase for their Rio Personal Digital Music Player.
- Require repair service after the expiration of the original warranty.
- Require service for product failures not covered under the SONICblue Incorporated warranty on this product.

Out of warranty service is limited to the Personal Digital Music Player only and is not available for headphones, memory cards or other accessories.

The fee for out of warranty repairs is payable by credit card at the time the service agreement

is created and Return Authorization provided. This fee includes all labor, parts needing replacement, and return shipping.

You must deliver the product to SONICblue Incorporated in order to obtain out of warranty service. You must pay for shipping to SONICblue Incorporated. It is recommended that you use a shipping service providing you with tracking capability, because we will not be responsible for items lost in the mail. A Return Authorization number is required for all shipments to SONICblue Incorporated. Please contact our Customer Care Center for more information or to arrange for out of warranty service.

Limits of liability

We are only responsible for the repair of this product. We will not be liable to you or anyone else for any damages that result from the failure of this product or from the breach of any express or implied warranties. These include damage to other equipment, lost data, lost profits, or any consequential, incidental, or punitive damages. IN NO EVENT WILL SONICblue Incorporated BE LIABLE FOR ANY AMOUNT GREATER THAN THE CURRENTLY SUGGESTED RETAIL PRICE OF THIS PRODUCT.

THIS WRITTEN WARRANTY REPRESENTS THE ENTIRE WARRANTY AGREEMENT BETWEEN SONICblue Incorporated AND YOU. THIS WARRANTY IS GIVEN IN LIEU OF ALL OTHER WARRANTIES, EXPRESS OR IMPLIED, INCLUDING WITHOUT LIMITATION IMPLIED WARRANTIES OF MERCHANTABILITY AND FITNESS FOR A PARTICULAR PURPOSE. THIS WARRANTY IS LIMITED TO THE TERM SPECIFIED ABOVE. NO WARRANTIES, EITHER EXPRESS OR IMPLIED, WILL APPLY AFTER THIS PERIOD. THIS WARRANTY MAY NOT BE ALTERED IN ANY WAY OTHER THAN IN WRITING BY AN OFFICER OF SONICblue Incorporated This warranty gives you specific legal rights and you may also have other rights, which vary, from state to state. Some states do not allow limitations on how long an implied warranty lasts, so the above limitation may not apply to you.



Regulatory Information

Federal Communications Commission (FCC)

The device has been tested and found to comply with limits for a Class B computing device according to the specifications in FCC rules Part 15. Operation is subject to the following two conditions:

- 1 This device may not cause harmful interference, and
- 2 This device must accept any interference received, including interference that may cause undesired operation.

If your device needs repairs, you must arrange for the manufacturer to make them if you are to keep the device's FCC registration valid. This equipment, like other electronic equipment, generates and uses radio frequency energy. If not installed and used according to the instructions in this manual, this equipment may cause interference with your radio and television reception. If you think this equipment is causing interference with your radio or television reception, try turning the equipment off and on. If the interference problems stop when the equipment is switched off, then the equipment is probably causing the interference. You may be able to correct the problem by doing one or more of the following:

- Adjust the position of the radio or TV antenna.
- Move the device away from the radio or TV.

If necessary, consult your dealer or an experienced radio or television technician. You may find this booklet helpful: "How to Identify and Resolve Radio and TV Interference Problems" (Stock No. 004-000-00345-4), prepared by the FCC and available from the U.S. Government Printing Office, Washington, DC 20402. See individual devices for FCC ID and registration numbers.

Industry Canada

This Class B digital apparatus complies with Canadian ICES-003.

Cet appareil numérique de la classe B est conforme à la norme NMB-003 du Canada.

CISPR 22

Warning: This equipment is belongs to class A of CISPR 22 recommendation. In a residential environment, it can produce electromagnetic interference. In that case, it can be requested to the user to take some appropriated measures.

EU Declaration of Conformity



We

DIAMOND Multimedia Systems Vertriebs GmbH
Moosstrasse 18b

D-82319, Starnberg

GERMANY

On behalf of

SONICblue Incorporated

2841 Mission College Blvd.
Santa Clara, CA 95054 USA

Hereby declare under our sole responsibility that the following product(s) conform to the requirements of the European Parliament Council Directive 1999/5/EC dated 9th March 1999. And to which this declaration is related the product(s) listed are in conformity with the following relevant harmonized European Standards or other normative documents, the references of which have been published in the Official Journal of the European Communities / European Union.

Product (s): **RIO 600**

Harmonized Standards:

EN 55022: 1994, A1'95, A2'97 Specification for limits and methods of measurement of radio interference characteristics of Information Technology (IT) equipment.

EN 50082-1: 1998 Electromagnetic Compatibility, Generic Immunity Standard, Part 1. Residential, Commercial and Light Industry.

EN 50332-1: 1999 Maximum sound pressure level measurement methodology and limit considerations. Part 1 General method for "one package equipment".

CE/IEC 60065: 1998 Audio, Video, and similar electronic apparatus Safety Requirements.

In accordance with the terms of Directive 1999/5/EC, 89/336/EEC, 73/23/EEC and Council Decision 98/482/EC the original signed Declaration is retained by us in the product compliance folder. Upon request photocopies may be available.

Date: 02 November 2000.

Place: St. Ingbert.

Name of Authorizing Person

Scott Naccarato.

Regulatory Compliance Manager.



Customer Care

Technical support

Hours of Operation

Monday-Friday 5am-7pm PT

Saturday 8am-4pm PT

Email

customersupport@riohome.com

Telephone

New product support

(541) 967-2450

TDD

(541) 967-2451

Fax

(541) 967-2401

Web site

www.riohome.com

[Solution Library](#)

Customer service

Hours of Operation

Monday-Friday 6am-5pm PT

Email

customersupport@riohome.com

Telephone

1-800-468-5846 or (541) 967-2450

Fax

(541) 967-2485

Rio Product Support

With every Rio product you receive the following support services:

- Unlimited access to the Rio web-based technical information resources, available 24 hours a day every day at www.riohome.com. Here you will find FAQ files, a knowledge-base search engine, product updates, and other useful tools.
- Unlimited e-mail support for the duration of your Rio product hardware warranty period.
- Access to the latest software updates and enhancements for Rio product via our [Web site](#).

New Product Support

In addition to the services mentioned above, all retail purchasers of Rio products receive person-to-person telephone support for the first 90 days of ownership.

Extended Service Option

To extend support after the expiration of New Product Support, we offer an affordable, fee-based, Extended Service Option. Please see the [Web site](#) for details.

Premium Support Service

Have a tough question and no time to wait? Rio also offers a Premium Support service. No hold time and your call is routed directly to our most experienced support technicians. This service is available at a low per minute fee whether your Rio product is in warranty or not. (You must be 18 years or older or have your parent's permission to use this service). Please see the [Web site](#) for details.

Index

A

- AAC 24
- ADPCM 24
- alarm
 - set 16
- audio file size 24
- audio functions 6

B

- backpack
 - 32 MB 21
 - 64 MB 21
- batteries
 - Rio 600 alkaline replacement 21, 28
- battery calibration 15
- battery power level 15, 16
- bitrate 24
- bookmark
 - add 10
 - play or delete 10

C

- calibrate 15
- car cassette adapter 23
- carrying cases 23
- CDDB 24, 25
- CE declaration 33
- clock
 - display 16
 - set 13
- codec (defined) 24
- codecs
 - AAC 24
 - ADPCM 24
 - MP3 26
 - WMA 26
- customer care 35

D

- delete
 - playlist 12
 - track 9
- display
 - battery information 15, 16
 - firmware version 16
 - memory information 16
- DRM 25

E

- encode (defined) 25
- equalizer
 - built in 6
 - custom 6

F

- faceplates 22
- Federal Communications Commission (FCC) statement 33
- file compression 24
- firmware
 - defined 25
 - how to upgrade 28
- forward button 5
- frequently asked questions 27

G

- gracenote 25

H

- headphones 22

M

- Mac software 19
- MP3 26

O

- one year limited warranty 31
- online software registration 30

P

- pick a track 9
- play options
 - random 8
 - repeat 8
- play/pause button 4
- playlist
 - build 11
 - choose 11
 - defined 26
 - modify 12
 - remove 12
- power saving 13

R

- randomize tracks 8
- RealJukebox software 17
- regulatory information 33
- repeat tracks 8
- reverse button 5
- Rio 600 batteries
 - approved replacement 16

RioTone Faceplate 22

S

SDMI 26

select button 4

skins 26

software registration 30

SoundJam MP software 19

stop button 4

T

technical support 35

time and date

 display 16

 set 13

time to sleep setting 13

troubleshooting 27

U

USB 26

W

warranty 31

WMA 26