



Changing the proxy settings

Microsoft Internet Explorer

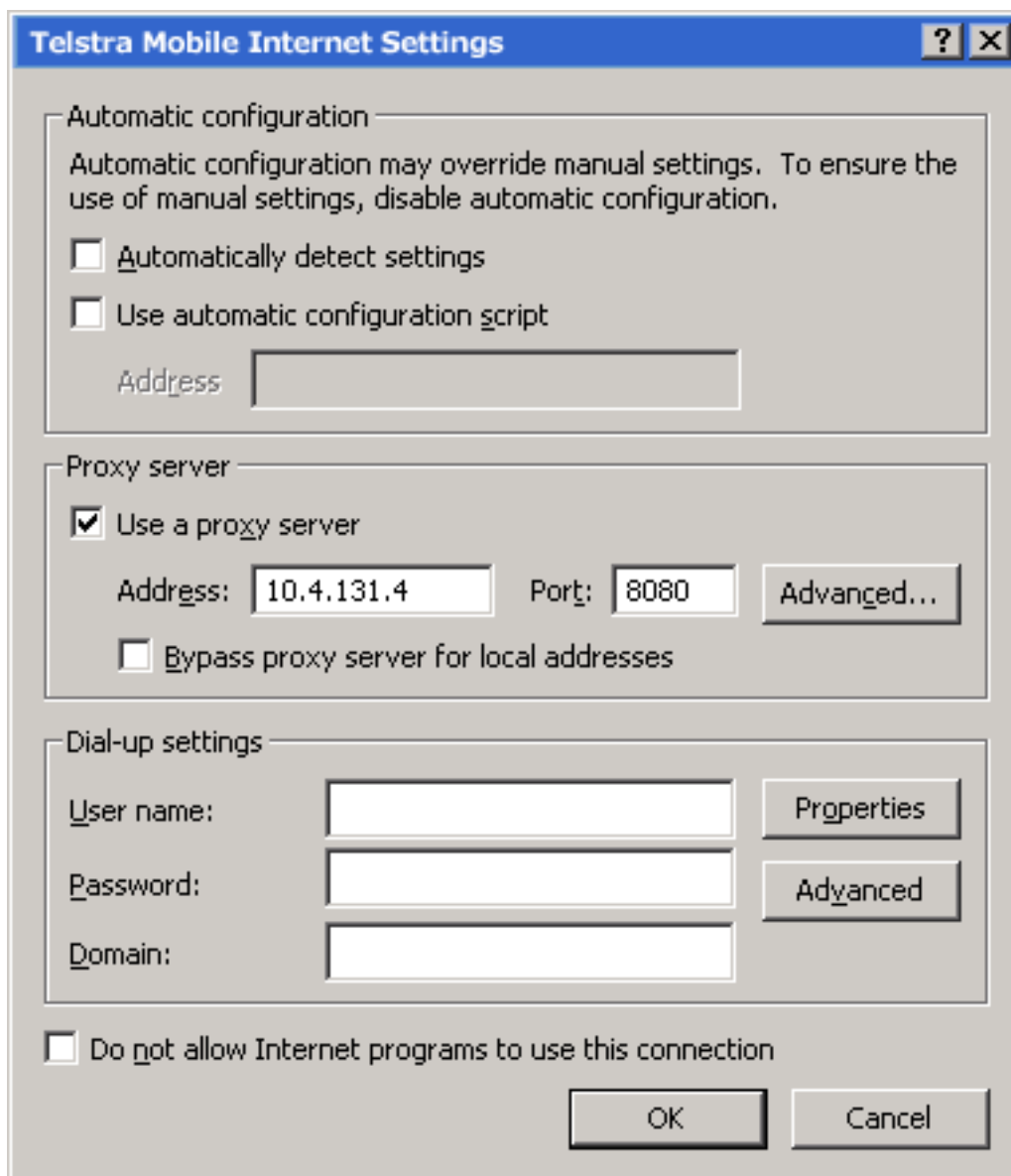
Within Internet Explorer, go to **Tools -> Internet Options -> Connections** Tab
Highlight the Dial-Up Networking **connection** you use to connect to Telstra Mobile Internet and click **Settings**

Tick "Use a Proxy Server" and enter the:

Address: **10.4.131.4**

Port: **8080**

Click **OK -> OK**





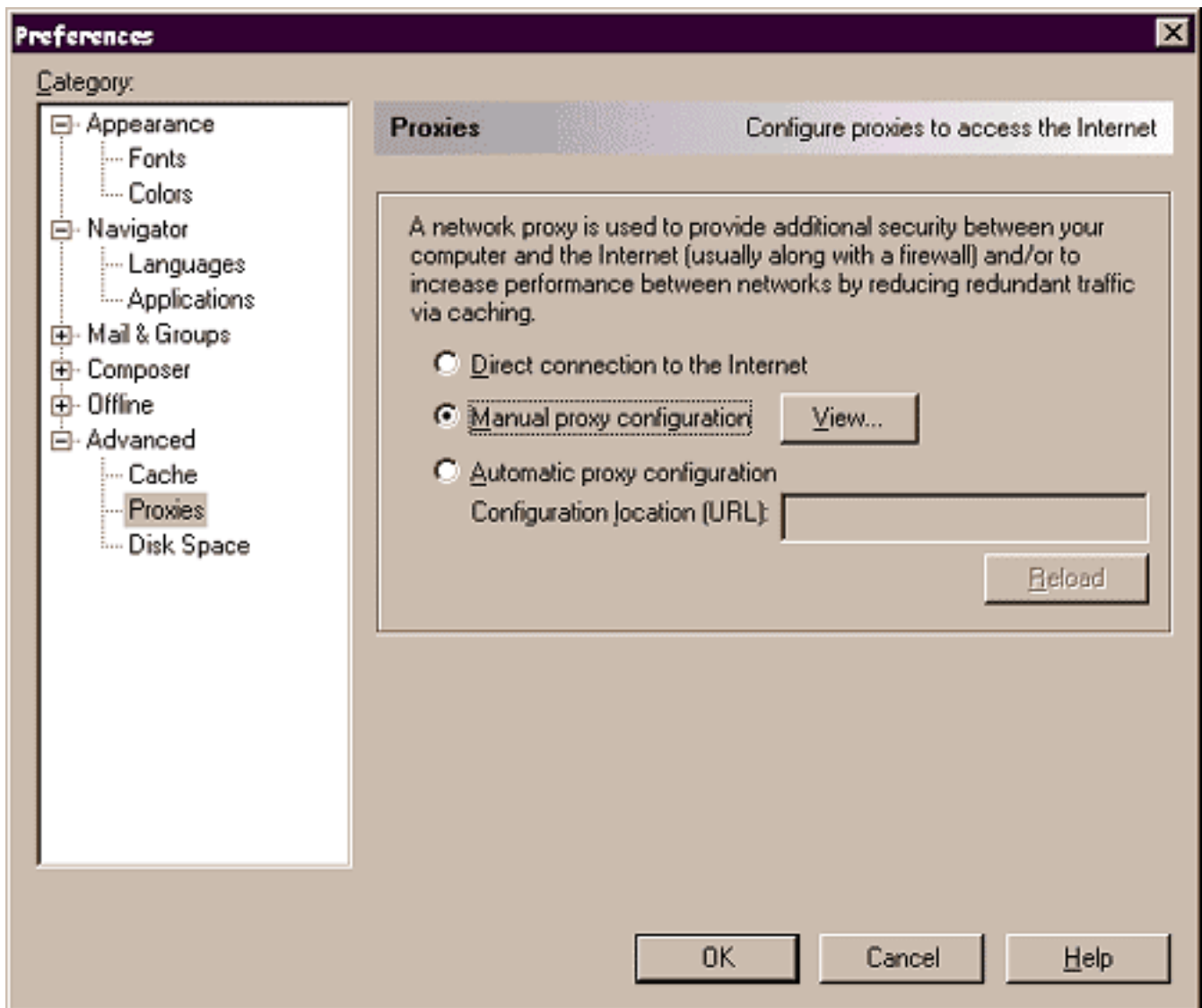
Netscape Navigator

Go to **Edit -> Preferences**

Click on the plus sign next to "**Advanced**" to expand the folder

Click on **Proxies**

Choose **Manual Proxy configuration** and press **View**



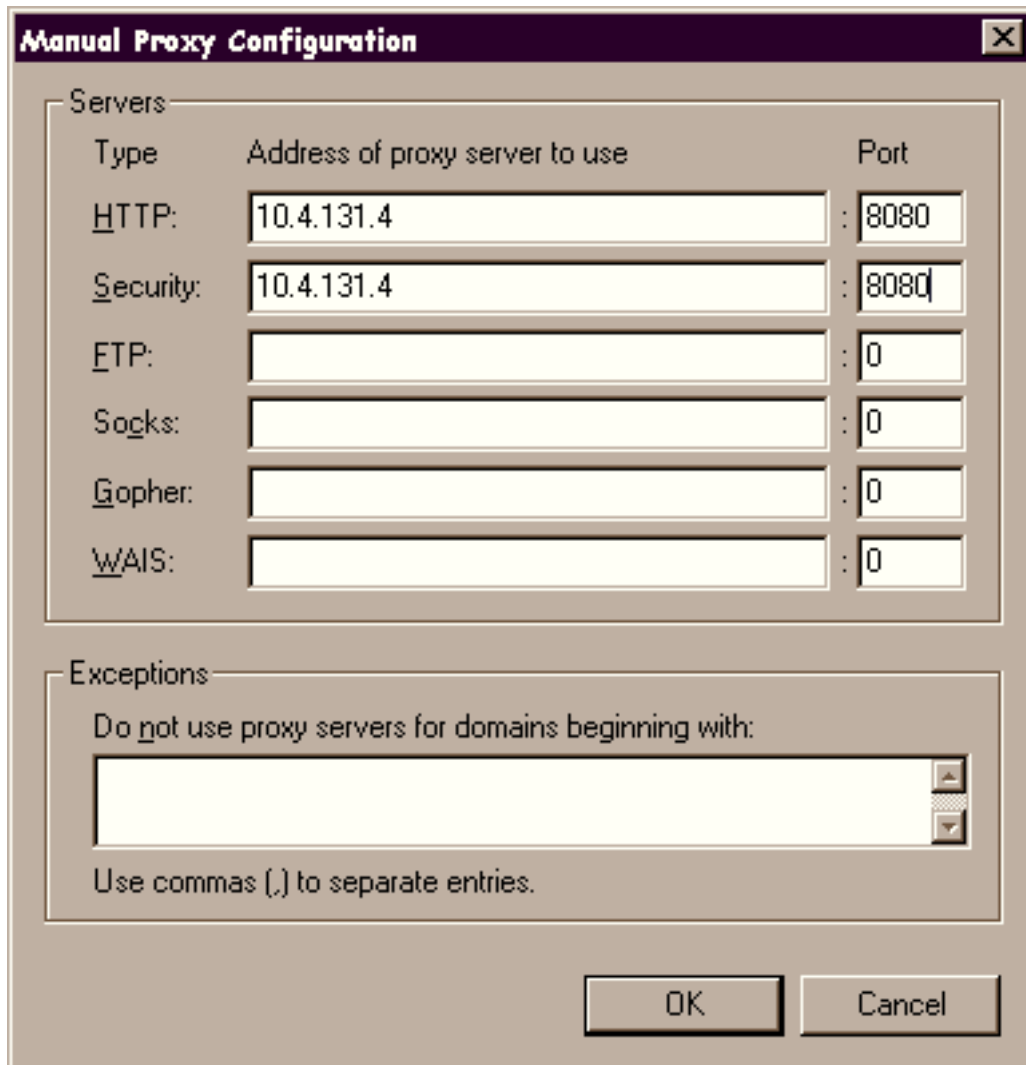
Enter **10.4.131.4** in the HTTP field

Enter **8080** in the Port field

Enter **10.4.131.4** in the Security field

Enter **8080** in the Port field

Click **OK -> OK**



Windows CE (Internet Explorer)

Choose **Internet Explorer** from the Start menu

Go to **Tools -> Options**

Choose the "**Connections**" tab

Choose the connection you use to connect to Telstra Mobile Internet

Tick "**Use a proxy server**" and enter:

IP Address: **10.4.131.4**

Port: **8080**

Click "**OK**" in top right corner

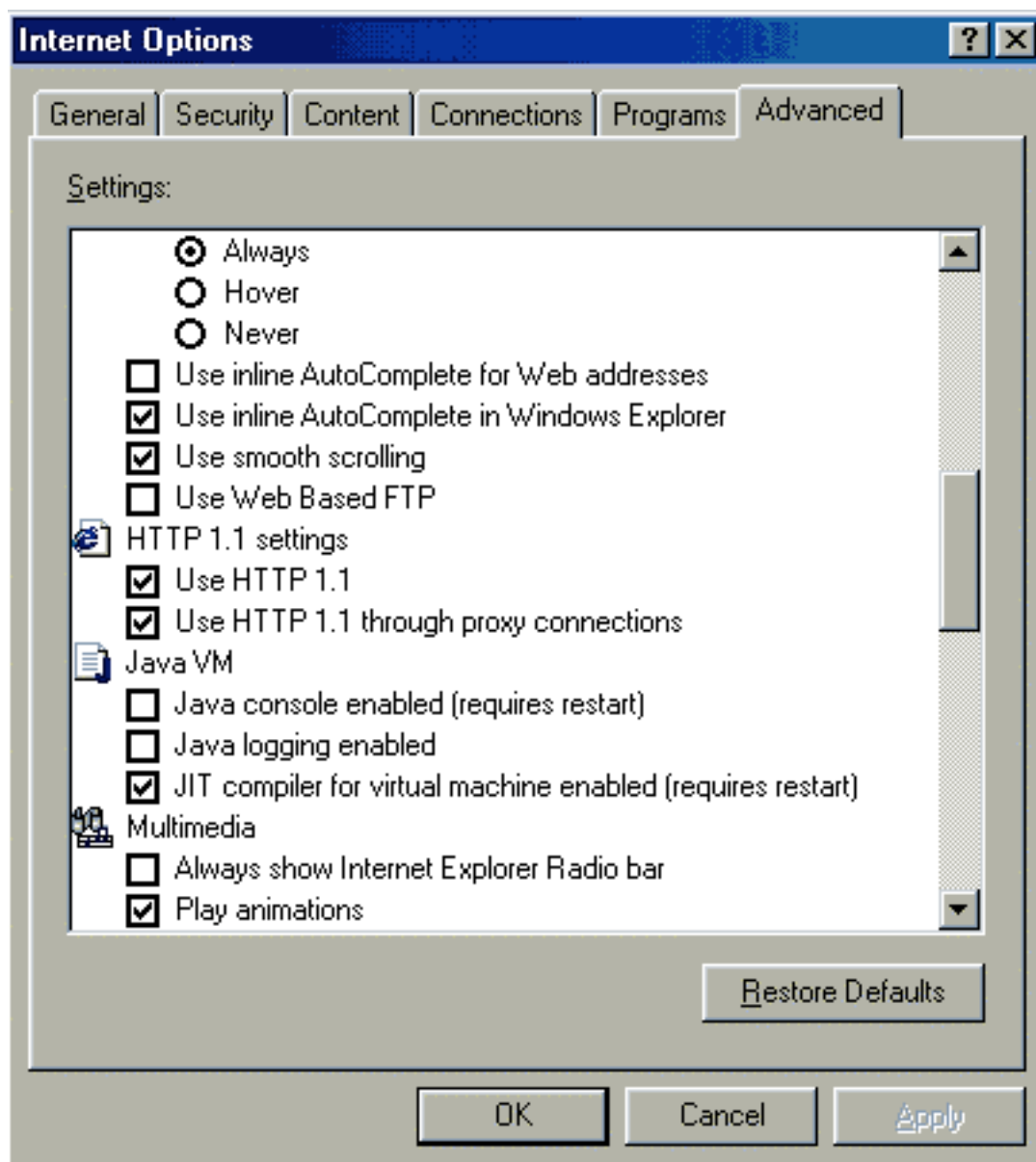
Other settings

Microsoft Internet Explorer

Microsoft Internet Explorer users will need to alter the following settings:

Go to **Tools -> Internet Options -> Advanced** Tab

Scroll down to the **"HTTP 1.1 settings"** section, and tick both the **"Use HTTP 1.1"** and the **"Use HTTP 1.1 through proxy connections"** boxes:





Changing your compression settings

If you are using a laptop or PC to browse the Internet, there are two ways that you can **change** your compression settings:

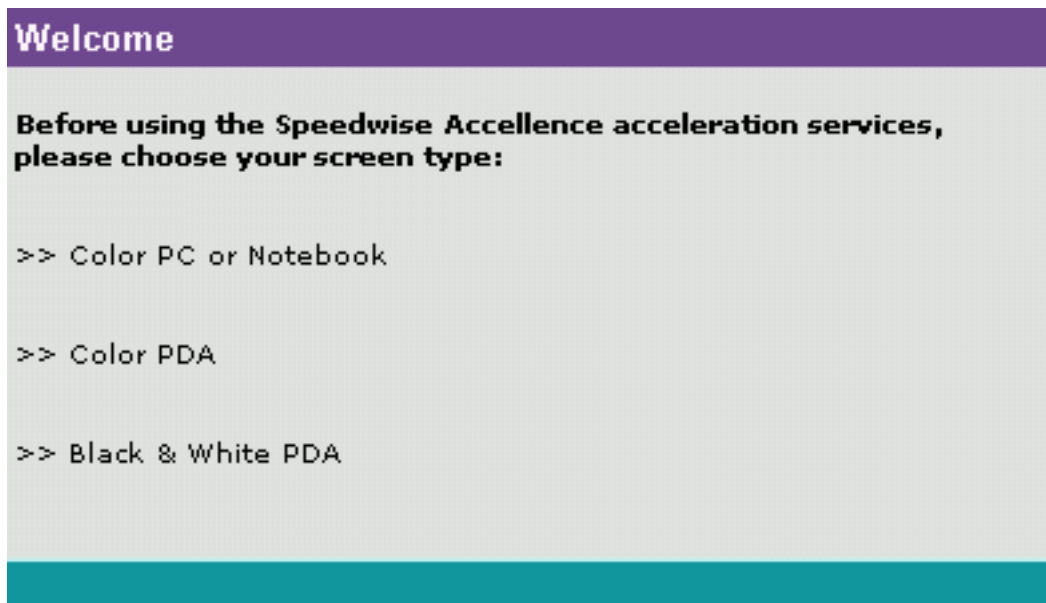
- Via the **set-up page**, or;
- via the **settings window**.

If you are using a **PDA**, however, then the **only** way to change your compression settings is via the **set-up page**.

Via the Setup page

To use the set-up page, go to **<http://setup.speedwise.com>** once you have **enabled the proxy server**.

This allows you to **specify the type of device** you are using (eg. Colour PC/Laptop, Colour PDA, Black and White PDA), and whether or not to play GIF animations.



You can also turn the compression on and off using the setup.speedwise.com page. There is also an option to display a settings window.

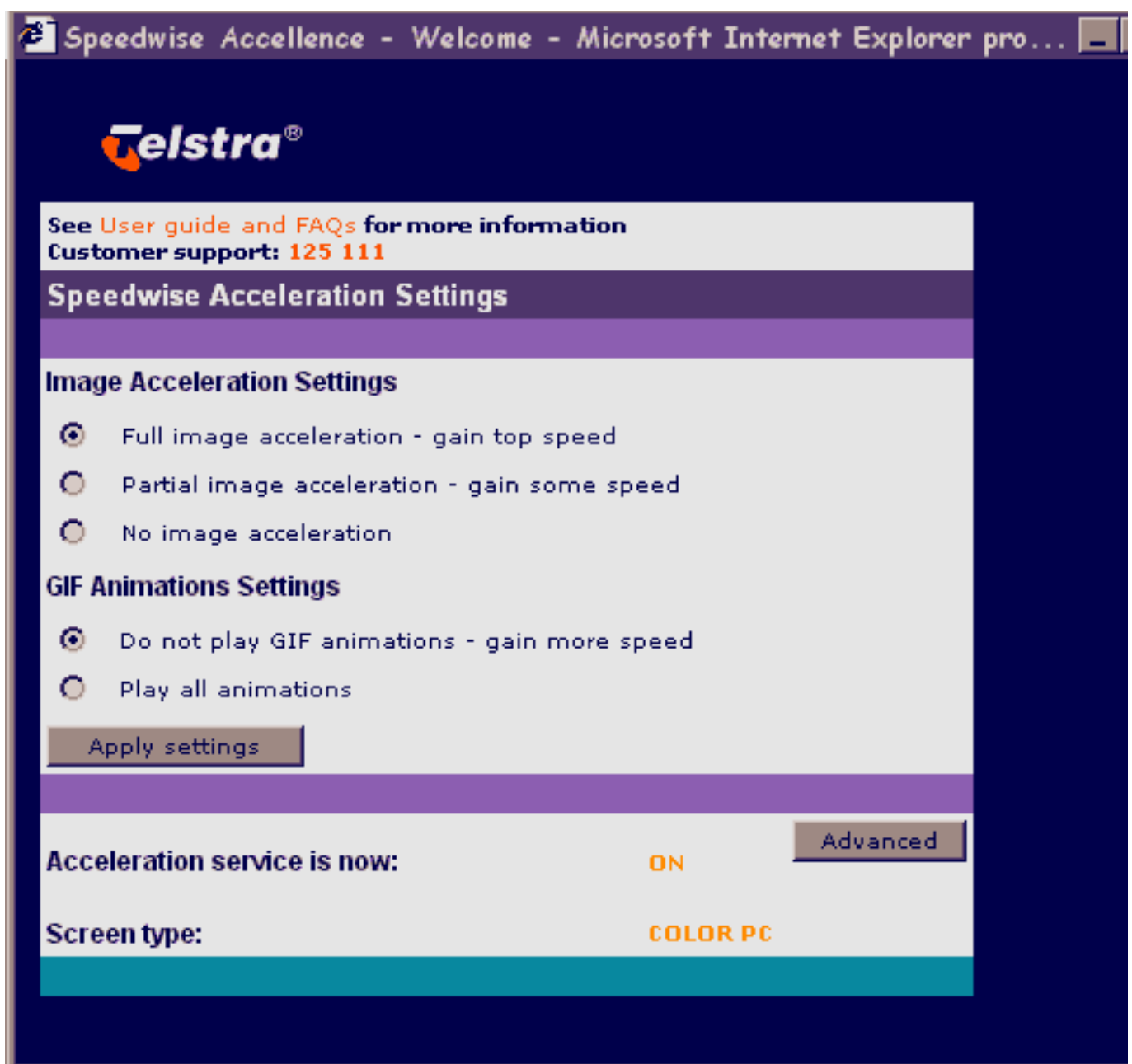


Via The Settings Window

This window allows you to **change** your compression settings whenever you like, without going back to the setup.speedwise.com page.

This window is the **second method** you can use to change your settings. Once you have chosen to display the settings window, it should come up automatically as soon as you attempt to download a web page.

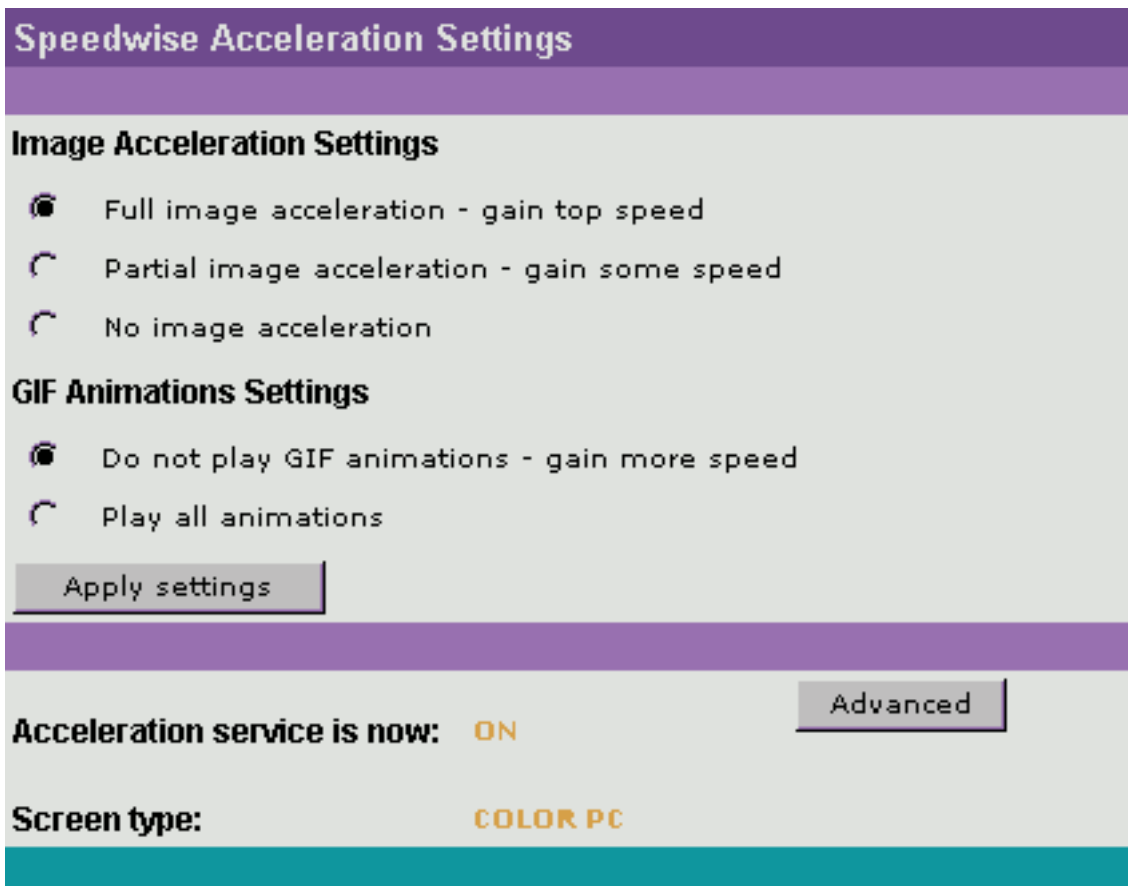
Shown **below** are the settings you can alter using this window:





1. Image Acceleration Settings

Choose a level of image optimisation based on your device type: Colour PC/Notebook, Colour PDA, or B&W PDA.



Colour PC or Notebook

- Full Image Acceleration: Select this option to download a web page at maximum speed (ie maximum acceleration), with a minor reduction in image quality.
- Partial Image Acceleration: Select this option to download a web page with higher quality images but with less acceleration than with Full Image Acceleration.
- No Image Acceleration: Select this option to download images in their original format, with no acceleration that results from changes to graphics.

Colour PDA

Same as for 'Colour PC or Notebook'.

Black & White PDA

- Image adjustment for black and white screens: Enhances image quality especially for B&W screens, using high image acceleration.
- No Image Adjustment: Select this option to download an image in its original format, with no acceleration that results from changes to graphics.



2. GIF Animation Settings

Some animations you see on web sites are animated GIFs. Preventing animations from running will enable you to maximize acceleration.

- Do not play GIF animations: Increases web page download speed by disabling animations.
- Play all animations: Retains all GIF animations; the result will be less acceleration.

3. Apply Settings button

Applies any new settings you defined, using the choices you made for the parameters described in the above sections.

4. Acceleration Service Is Now

Displays the current status of the acceleration service: On or Off.

5. Screen Type

Displays the currently defined screen type: Colour PC or Notebook, Colour PDA, or B&W PDA.

6. Advanced button

Clicking the 'Advanced' button will lead you to the third (and last) Accellence Settings user interface screen.

Speedwise Acceleration Settings screen (advanced)

7. Window Settings

Enables you to set how you would like to access the Accellence Settings interface.

The screenshot shows the 'Speedwise Acceleration Settings' interface. It has a purple header bar with the title. Below it, there are two sections: 'Window Settings' and 'Acceleration Service Settings'. In 'Window Settings', there are two radio buttons: 'Show settings window' (selected) and 'Do not show settings window (access settings via http://setup.speedwise.com)'. In 'Acceleration Service Settings', there are two radio buttons: 'Use Speedwise Acceleration service' (selected) and 'Do not use Speedwise Acceleration service'. Below these sections is an 'Apply settings' button. At the bottom, there is a status bar showing 'Acceleration service is now: ON' with a 'Back' button to its right, and 'Screen type: COLOR PC' with a 'Restore default settings' button below it and a 'Return to screen choice' button at the very bottom.



- Show settings window: Displays the Settings interface in a separate browser window when you use your browser.
- Do not show settings window: If you choose this option, to view the Settings interface you will need to go to <http://setup.speedwise.com>.

8. Acceleration Service Settings

Turns the Accellence service On or Off.

- Use Speedwise Acceleration Service: Select this option to enable the Speedwise acceleration service (with its default parameters).
- Do not use Speedwise Acceleration Service: Select this option to disable the Speedwise acceleration service.

9. Apply Settings button

Same as for 3.

10. Acceleration Service Is Now

Same as for 4.

11. Screen Type

Same as for 5.

12. Restore Default Settings

Restores the default settings defined by your service provider for each of the above parameters.

13. Return To Screen Choice

Takes you to the GUI screen in which you can define your screen type (Colour PC or Notebook, Colour PDA, or B&W PDA).

Speedwise Acceleration Settings screen (full) - see next page

This screen is accessed via the URL **<http://setup.speedwise.com>** (see previous instructions to adjust settings).

Speedwise Acceleration Settings

Image Acceleration Settings

Color PC / Notebook

- Full image acceleration - gain top speed
- Partial image acceleration - gain some speed
- No image acceleration

Color PDA

- Full image acceleration - gain top speed
- Partial image acceleration - gain some speed
- No image acceleration

Black & White PDA

- Image adjustment for black and white screens - gain top speed
- No image adjustment

GIF Animations Settings

- Do not play GIF animations - gain more speed
- Play all animations

Window Settings

- Show settings window
- Do not show settings window
(access settings via <http://setup.speedwise.com>)

Acceleration Service Settings

- Use Speedwise Acceleration service
- Do not use Speedwise Acceleration service

Acceleration service is now:

ON

Screen type:

COLOR PC

Restore default settings

Open settings window



14. Open Settings Window button

Opens a separate browser window with the Speedwise Acceleration Settings screen described previously in section 2.